

## Applications

- Front of house system
- Wedge
- Frontfill / Nearfill / Background

## Features + Benefits

- Passive 15"/1" loudspeaker system
- Rotatable CD horn
- Bi-functional enclosure design
- U-bracket
- Wide range of accessories

A complex passive crossover matches the components working perfectly together and allows for a full-range application without additional electronics.

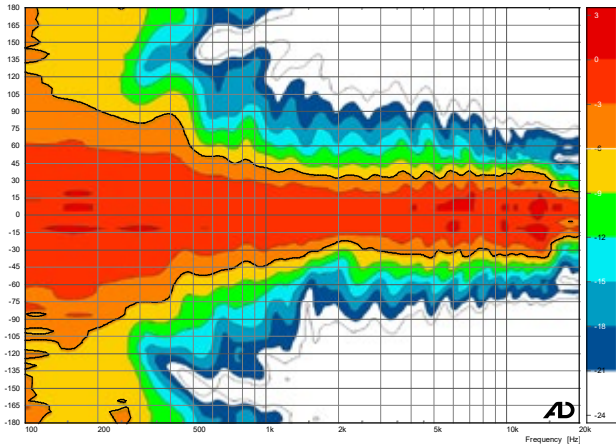
The Flex15 is a universal tool which can be used as a FoH speaker, as well as a wedge in combination with our Flex-Series Subs as a mid-high unit.

For easy and efficient cable connection as a wedge or near-fill, 4 Speakon NL4 are available. There are two connectors on the rear and two on the bottom.

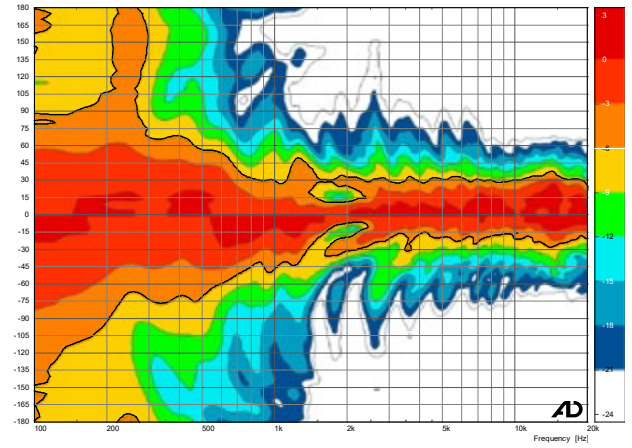


<b>Type</b>	Flex15
<b>Enclosure</b>	15 mm birch plywood with structure paint and monitor angles
<b>Basic layout</b>	2-way passive system,
<b>Protective Grille</b>	bass-reflex tuning 1.5 mm grille, covered with
<b>Components</b>	acoustic foam 15" neodymium low-mid speaker 1" ND compression driver with 1.7" voice coil rotatable CD-Horn passive crossover with phase correction
<b>Frequency Response</b>	70 Hz–19.5 kHz +/-3 dB
<b>Power handling RMS   peak</b>	400 W RMS   1.600 W Peak
<b>Nominal Impedance</b>	8 Ω
<b>Dispersion pattern</b>	75° x 50°
<b>Sensitivity</b>	98 dB
<b>SPLmax</b>	130 dB   peak   1 m
<b>Connectors</b>	NL4: 1+/1- on rear and bottom (2 each)
<b>Dimensions (w x h x d)</b>	450 x 700 x 390 mm
<b>net weight</b>	22 kg
<b>Accessories</b>	U-bracket, double flight case transport cover

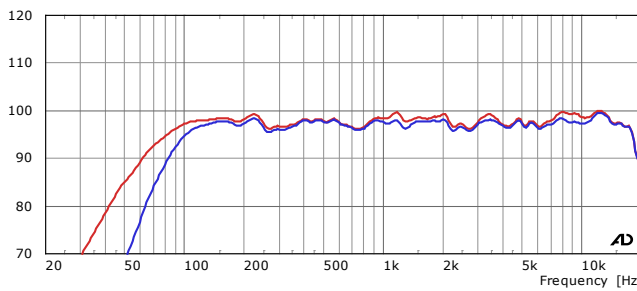
## Horizontal coverage pattern



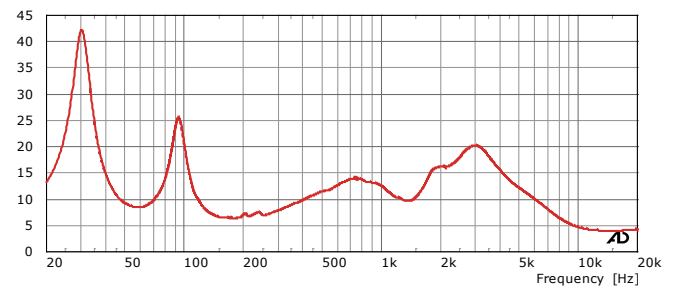
## Vertical coverage pattern



## Sensitivity / Processed Sensitivity



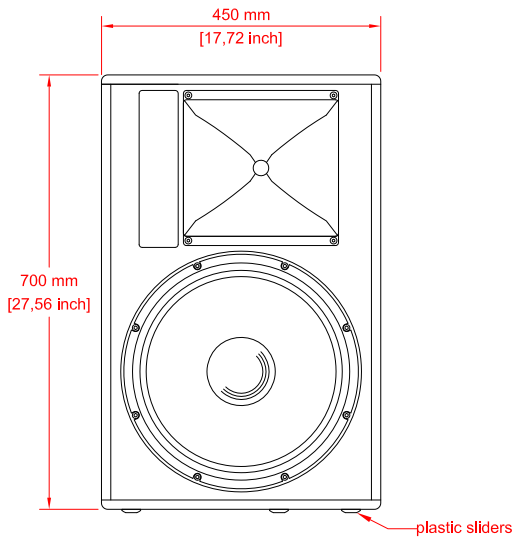
## Impedance



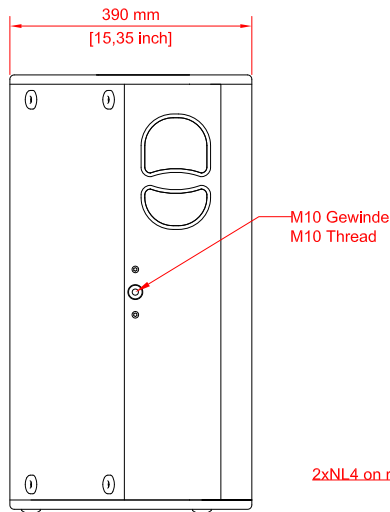
Notes on performance data and graphs:

- 2) Frequency response: Range of the processed response -6db
- 3) Power Handling: Is based on the AES power handling of the transducers.
- 4) Nominal Sensitivity: SPL at 1 Watt at nominal impedance, referenced to 1 Meter.

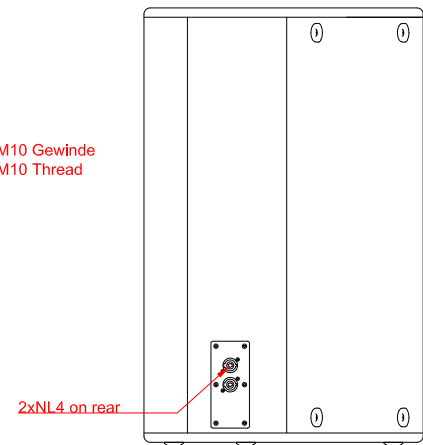
- 5) Measurement condition: Full space in the far field of the speaker. Time-windowed
- 6) Maximum SPL: Calculated from nominal sensitivity at stated peak input power.
- 7) Resolution: For better readability a 1/6 octave smoothing is applied.



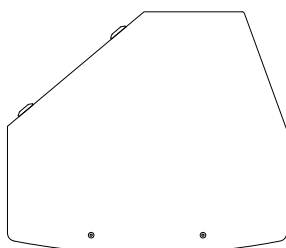
Front



Side



Rear



NL4 on bottom

