

Applications

- Front of house system
- Wedge
- Frontfill / Nearfill / Background

Features + Benefits

- Passive 15"/1" loudspeaker system
- Rotatable CD horn
- Bi-functional enclosure design
- U-bracket
- Wide range of accessories

A complex passive crossover matches the components working perfectly together and allows for a full-range application without additional electronics.

The Flex15 is a universal tool which can be used as a FoH speaker, as well as a wedge in combination with our Flex-Series Subs as a mid-high unit.

For easy and efficient cable connection as a wedge or near-fill, 4 Speakon NL4 are available. There are two connectors on the rear and two on the bottom.



Type Flex15

Enclosure 15 mm birch plywood
with structure paint and monitor angles

Basic layout 2-way passive system, bass-reflex tuning

Protective Grille 1.5 mm grille sheet steel, hex-stamped,
black acoustic foam on inside

Components 15" neodymium low-mid speaker
1" ND compression driver with 1.7" VC
rotatable CD-Horn
passive crossover with PPCN technology

Frequency Response 70 Hz-19.5 kHz +/-3 dB

Power handling RMS | peak 400 W RMS | 1.600 W Peak

Nominal Impedance 8 Ω

Dispersion pattern 75° x 50°

Sensitivity 98 dB

SPLmax 130 dB | peak | 1 m

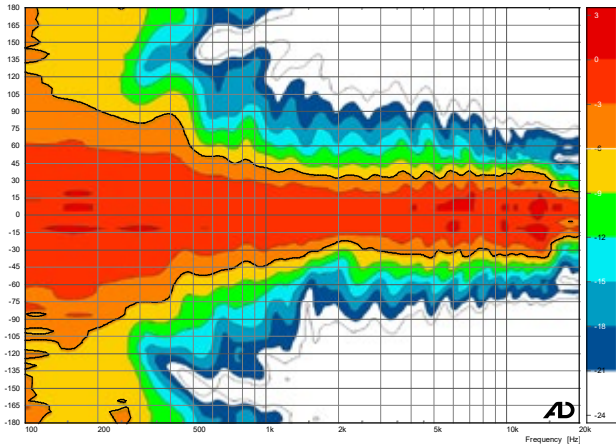
Connectors Neutrik NL4: 1+/1- on rear and bottom (2 each)

Dimensions (w x h x d) 450 x 700 x 390 mm

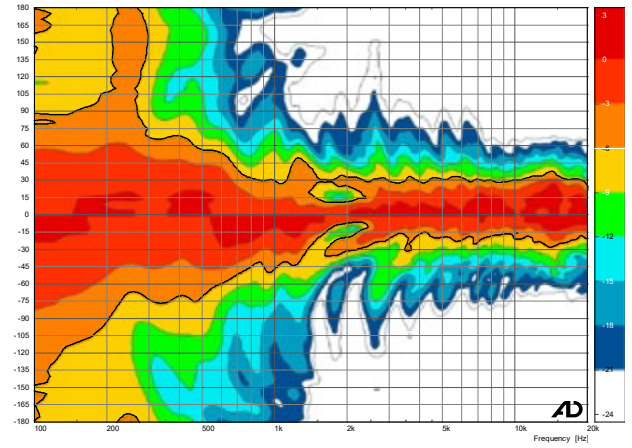
net weight 22 kg

Accessories U-bracket, double flight case
transport cover

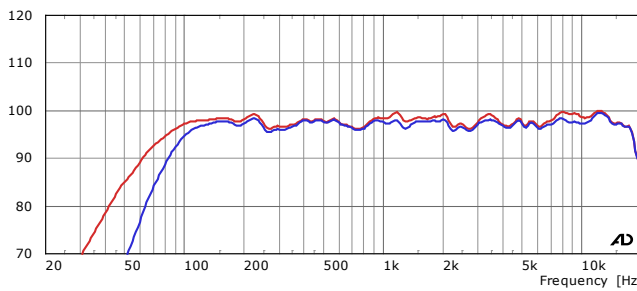
Horizontal coverage pattern



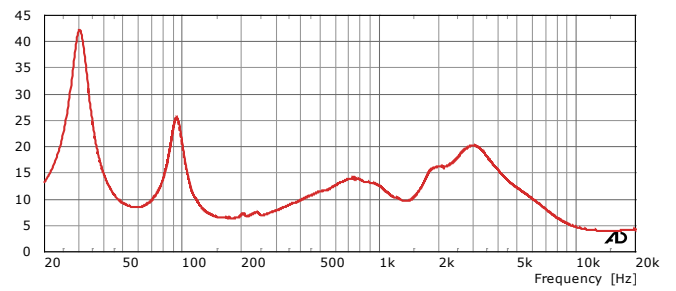
Vertical coverage pattern



Sensitivity / Processed Sensitivity



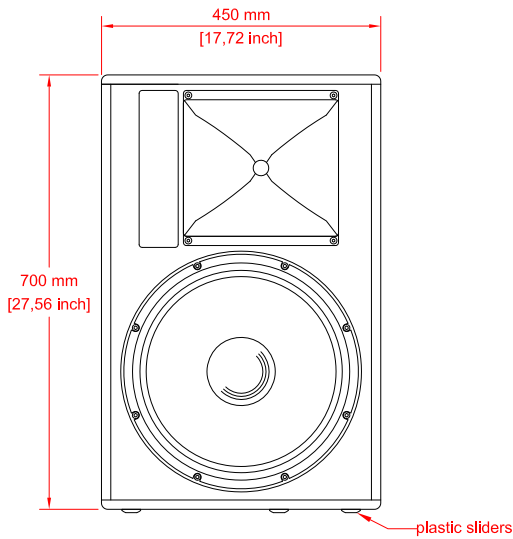
Impedance



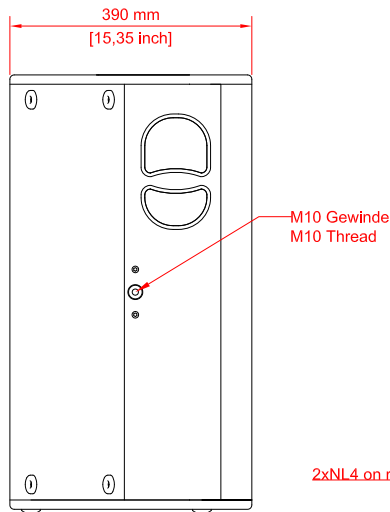
Notes on performance data and graphs:

- 2) Frequency response: Range of the processed response -6db
- 3) Power Handling: Is based on the AES power handling of the transducers.
- 4) Nominal Sensitivity: SPL at 1 Watt at nominal impedance, referenced to 1 Meter.

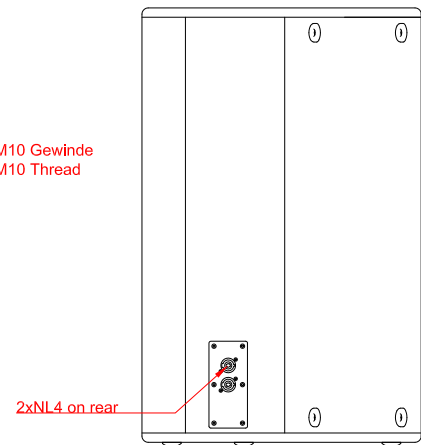
- 5) Measurement condition: Full space in the far field of the speaker. Time-windowed
- 6) Maximum SPL: Calculated from nominal sensitivity at stated peak input power.
- 7) Resolution: For better readability a 1/6 octave smoothing is applied.



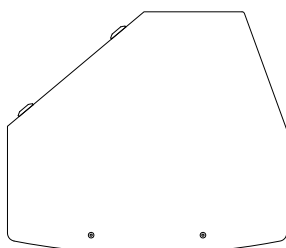
Front



Side



Rear



NL4 on bottom

