

## Applications

- FOH loudspeaker system
- High-End Monitor, Frontfill / Nearfill
- Expandable with subs forming up a powerful front PA

## Features + Benefits

- Elegant design, compact dimensions, low weight
- Wedge angle 55°, left & right versions available
- 15" high performance neodymium transducers
- 1.4" high performance neodymium compression driver
- optional pan-tilt bracket for easy rigging

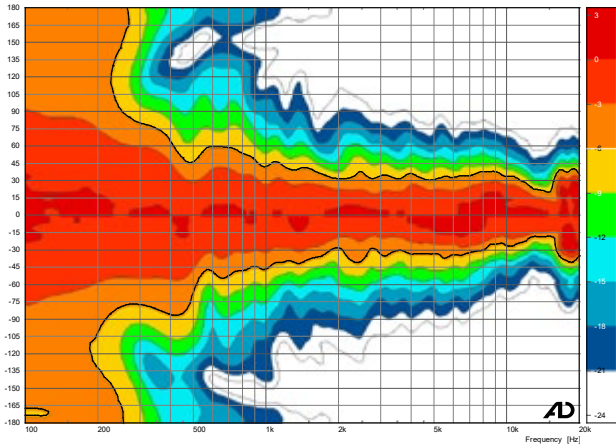
The Magnus series has been engineered for semi-active drive and thus unites the economic advantages of a passively crossed over loudspeaker with the sound quality, reliability and performance of an actively (i.e. DSP) controlled system. Its internal passive network provides optimal frequency division and phase alignment of both ways, and thus excellent directivity characteristics. Equalization, speaker protection and powering is provided through our AD-Systems system amplifiers.

The elegant, asymmetric shaped enclosure of the Magnus systems is available as left and right version and is covered with a robust Polyurea coating. Its multi-functional design allows operation on poles or loudspeaker stands, suspended (with bracket) or as stage monitor wedge. For flexible connection there are two Speakon NL4 sockets on the rear as well as one NL4 socket on top and bottom sides respectively.

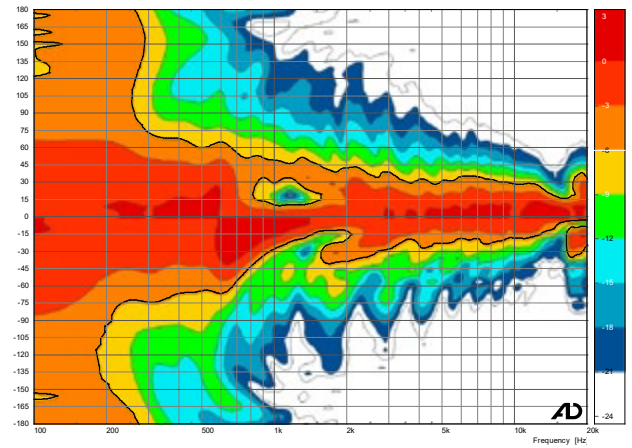
As a true all-purpose tool the Magnus systems are usable as stand alone fullrange loudspeaker, compact stage monitor or as mid-high unit in combination with a subwoofer.

<b>Type</b>	Magnus15
<b>Enclosure</b>	15/24 mm birch plywood with Polyurea coating, 55° wedge angle
<b>Basic layout</b>	2-Way passive, bass reflex tuning
<b>Protective Grille</b>	2.0 mm sheet steel, hex-stamped black acoustic foam on inside
<b>Components</b>	15" ND low mid woofer with 3.5" VC 1.4" ND compression driver with 2.5" VC on 75° x 50° BEM CD-Horn passive crossover with PPCN technology
<b>Frequency Response</b>	55 Hz–18 kHz +/-3 dB,
<b>Power handling RMS   peak</b>	600 W RMS   2.400 W Peak
<b>Nominal Impedance</b>	6 Ω
<b>Dispersion pattern</b>	75° x 50° constant coverage
<b>Sensitivity</b>	100 dB Lo-Mids, 109 dB High
<b>SPLmax</b>	134 dB (peak) @ 1m
<b>Connectors</b>	Neutrik Speakon NL4: 1+/1-
<b>Dimensions (w x h x d)</b>	430 x 700 x 362 mm
<b>net weight</b>	23.4 kg
<b>Accessories</b>	Pan-tilt bracket, twin road case, padded transport cover

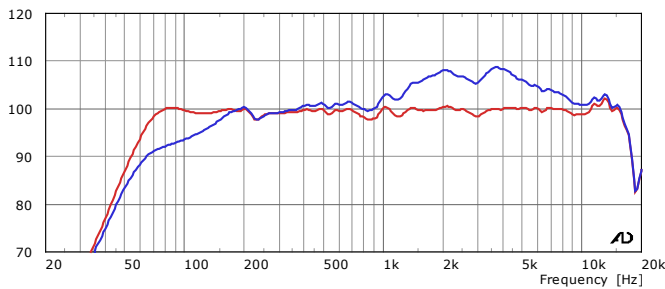
## Horizontal coverage pattern



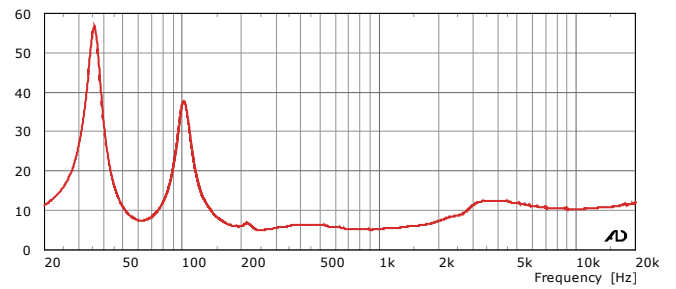
## Vertical coverage pattern



## Sensitivity / Processed Sensitivity



## Impedance



Notes on performance data and graphs:

- 2) Frequency response: Range of the processed response -6db
- 3) Power Handling: Is based on the AES power handling of the transducers.
- 4) Nominal Sensitivity: SPL at 1 Watt at nominal impedance, referenced to 1 Meter.

- 5) Measurement condition: Full space in the far field of the speaker. Time-windowed
- 6) Maximum SPL: Calculated from nominal sensitivity at stated peak input power.
- 7) Resolution: For better readability a 1/6 octave smoothing is applied.

