

## Applications

- Conference-, trainingsrooms
- Sport- and multipurpose hall
- Theatre
- Musicals
- Adventure parks
- Clubs

## Features + Benefits

- Passive 15" / 1" loudspeaker system
- Rotatable CD horn
- Bi-functional enclosure design
- U-bracket horizontal & vertical available
- Wide range of accessories
- in black and white available

The new developed horn with a directivity of 75° x 50° with its square opening is rotatable by 90°.

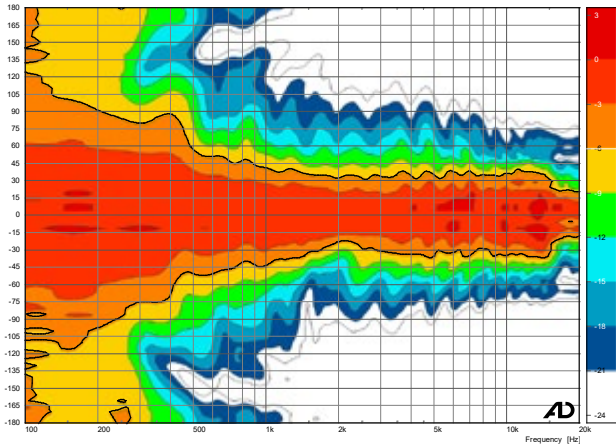
Several bass systems are available for applications where an expanded low-end frequency range is required.

The i.Flex15.1 is suitable for public address applications up to a distance of 20 meters. Because of its linear setup, no system controller is required.

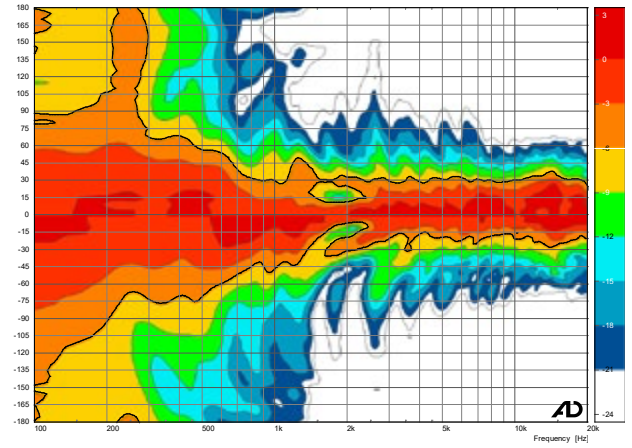


<b>Type</b>	i.Flex15.1
<b>Enclosure</b>	15 mm birch plywood with structure paint
<b>Basic layout</b>	2-way passive system,
<b>Protective Grille</b>	bass-reflex tuning 1.5 mm grille,
<b>Components</b>	covered with acoustic foam 15" low-mid speaker 1" compression driver with 1.7" voice coil rotatable CD-Horn passive crossover with phase correction
<b>Frequency Response</b>	70 Hz–19.5 kHz
<b>Power handling RMS   peak</b>	400 W RMS   1.600 W Peak
<b>Nominal Impedance</b>	8 Ω
<b>Dispersion pattern</b>	75° x 50°
<b>Sensitivity</b>	98 dB
<b>SPLmax</b>	130 dB   peak   1 m
<b>Connectors</b>	NL4: 1+/1-
<b>Dimensions (w x h x d)</b>	450 x 700 x 435 mm
<b>net weight</b>	28 kg
<b>Accessories</b>	100V transformer, special paint RAL colours horizontal or vertical u-bracket, miscellaneous special mountings

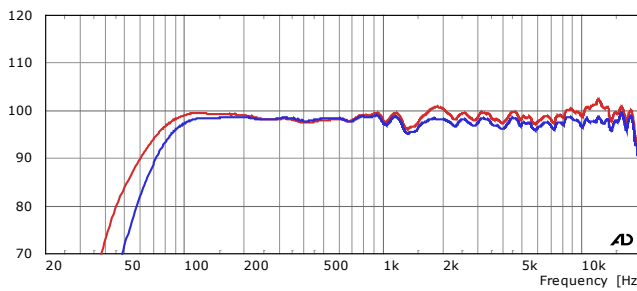
## Horizontal coverage pattern



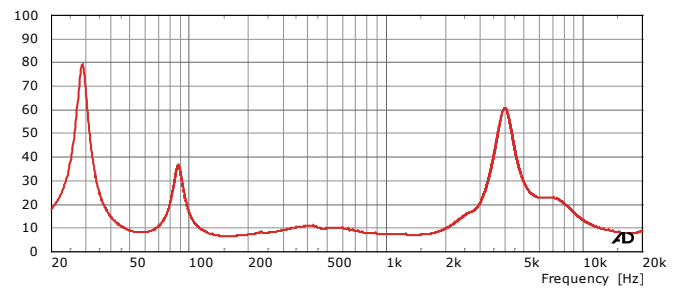
## Vertical coverage pattern



## Sensitivity / Processed Sensitivity



## Impedance



Notes on performance data and graphs:

- 2) Frequency response: Range of the processed response -6db
- 3) Power Handling: Is based on the AES power handling of the transducers.
- 4) Nominal Sensitivity: SPL at 1 Watt at nominal impedance, referenced to 1 Meter.

- 5) Measurement condition: Full space in the far field of the speaker. Time-windowed
- 6) Maximum SPL: Calculated from nominal sensitivity at stated peak input power.
- 7) Resolution: For better readability a 1/6 octave smoothing is applied.

