

## Applications

- Conference-, trainingsrooms
- Sport- and multipurpose hall
- Theatre
- Musicals
- Adventure parks
- Clubs

## Features + Benefits

- Passive 15" / 1.4" loudspeaker system
- Rotatable CD horn
- Bi-functional enclosure design
- U-bracket horizontal & vertical available
- Wide range of accessories
- in black and white available

The new developed horn with a directivity of 75° x 50° with its square opening is rotatable by 90°.

For applications where an expanded frequency range is required at the low end, several bass systems are available.

The i.Flex15.2 is suitable for public address applications to a distance up to 25 metres. No system controller is required because of its linear tuning.



**Type** i.Flex15.2

**Enclosure** 15 mm birch plywood  
with structure paint

**Basic layout** 2-way passive system, bass-reflex tuning

**Protective Grille** 1.5 mm grille covered  
with acoustic foam

**Components** 15" low-mid speaker  
1.4" compression driver with 2.5" voice coil  
rotatable CD-horn  
passive crossover with PPCN technology

**Frequency Response** 70 Hz–18 kHz

**Power handling RMS | peak** 450 W RMS | 1.800 W Peak

**Nominal Impedance** 8 Ω

**Dispersion pattern** 75°x50°

**Sensitivity** 98 dB

**SPLmax** 131 dB | peak | 1 m

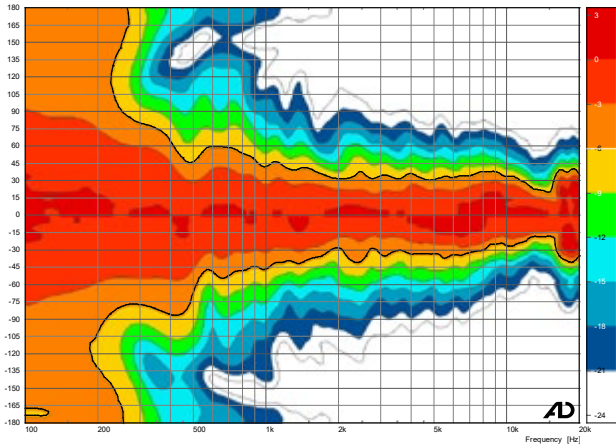
**Connectors** Neutrik Speakon NL4: 1+/1-

**Dimensions (w x h x d)** 450 x 700 x 435 mm

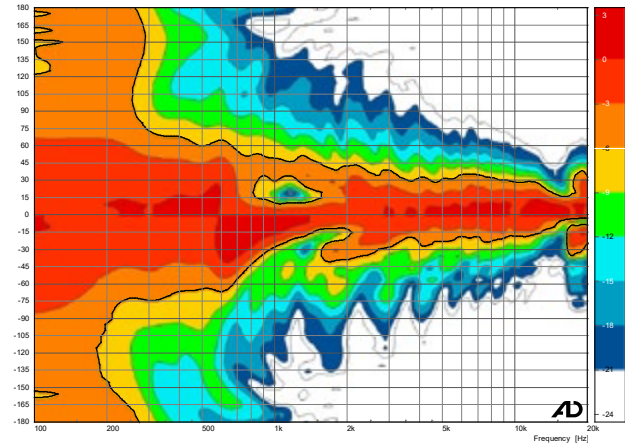
**net weight** 30.5 kg

**Accessories** 100V transformer (ELA)  
special paint RAL colours available  
horizontal or vertical u-bracket  
miscellaneous special mountings

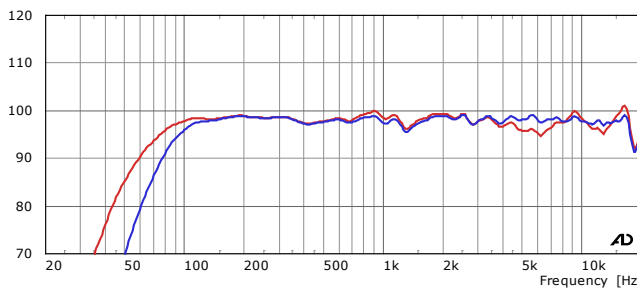
## Horizontal coverage pattern



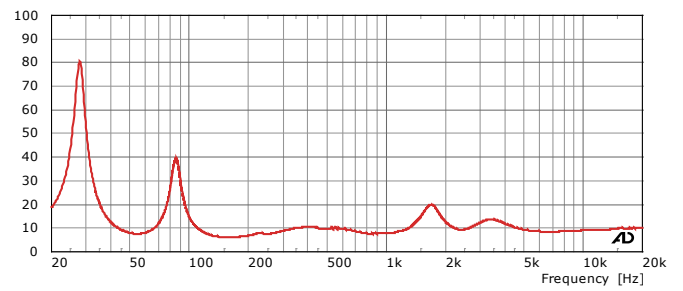
## Vertical coverage pattern



## Sensitivity / Processed Sensitivity



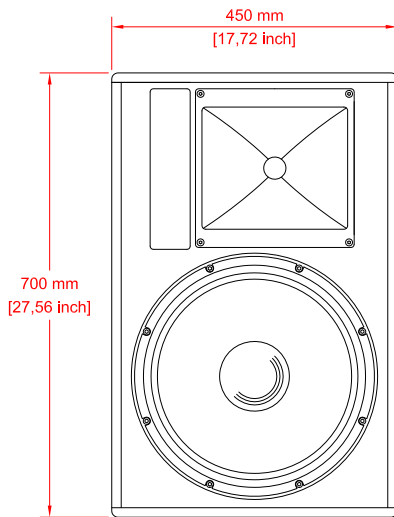
## Impedance



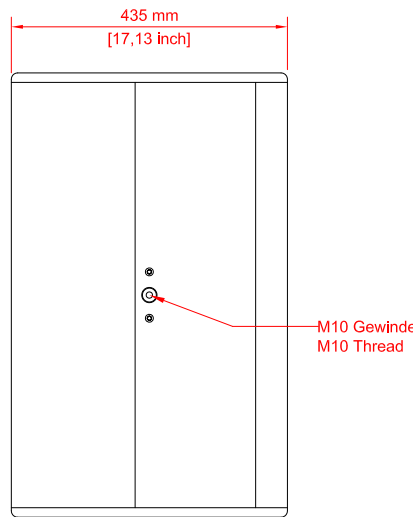
Notes on performance data and graphs:

- 2) Frequency response: Range of the processed response -6db
- 3) Power Handling: Is based on the AES power handling of the transducers.
- 4) Nominal Sensitivity: SPL at 1 Watt at nominal impedance, referenced to 1 Meter.

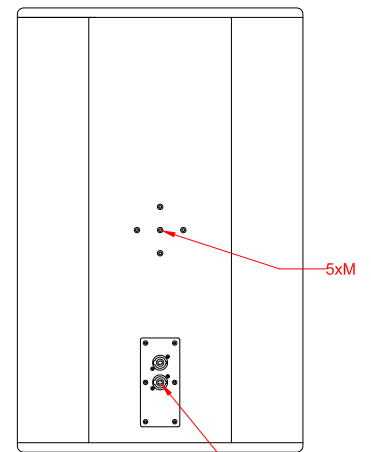
- 5) Measurement condition: Full space in the far field of the speaker. Time-windowed
- 6) Maximum SPL: Calculated from nominal sensitivity at stated peak input power.
- 7) Resolution: For better readability a 1/6 octave smoothing is applied.



Front



Side



Rear

